

ZSi

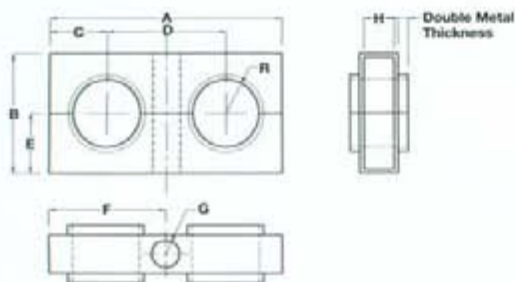
Z-CLAMP



Multiple Line Clamping System

Clamp Units

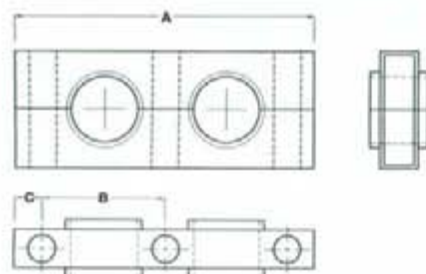
Standard Unit



- Stackable for space conservation
- Maintains consistent center line dimensions between lines both horizontally and vertically (in a stacking application)
- Mix and match pipe, tube, hose and junction adapters
- Suited for all types of hydraulic applications
- Available in standard and outside hole mounting configurations

Part Number	Number of Holes	A	B	C	D	E	F	G	H	R
HAC-1 Series 1-1/2" 14 Gauge										
HAC-1-2	2	2.938"	1.50"	0.719"	1.50"	0.750"	1.469"	0.344"	0.550"	0.422"
HAC-1-3	3	4.406"	1.50"	0.719"	1.50"	0.750"	1.469"	0.344"	0.550"	0.422"
HAC-1-4	4	5.940"	1.50"	0.719"	1.50"	0.750"	1.469"	0.344"	0.550"	0.422"
HAC-1-5	5	7.140"	1.50"	0.594"	1.50"	0.750"	1.343"	0.344"	0.550"	0.422"
HAC-1-6	6	8.938"	1.50"	0.719"	1.50"	0.750"	1.469"	0.344"	0.550"	0.422"
HAC-1-7	7	10.188"	1.50"	0.594"	1.50"	0.750"	1.343"	0.344"	0.550"	0.422"
HAC-1-32	32	48.00"	1.50"		1.50"	0.750"		0.344"	0.550"	0.422"
HAC-2 Series 2" 14 Gauge										
HAC-2-2	2	3.875"	2.00"	0.938"	2.00"	1.00"	1.938"	0.344"	0.550"	0.594"
HAC-2-3	3	5.641"	2.00"	0.844"	2.00"	1.00"	1.844"	0.344"	0.550"	0.594"
HAC-2-4	4	7.891"	2.00"	0.938"	2.00"	1.00"	1.938"	0.344"	0.550"	0.594"
HAC-2-5	5	9.672"	2.00"	0.844"	2.00"	1.00"	1.844"	0.344"	0.550"	0.594"
HAC-2-6	6	11.672"	2.00"	0.813"	2.00"	1.00"	1.813"	0.344"	0.550"	0.594"
HAC-2-7	7	13.625"	2.00"	0.813"	2.00"	1.00"	1.813"	0.344"	0.550"	0.594"
HAC-2-24	24	48.00"	2.00"		2.00"	1.00"		0.344"	0.550"	0.594"
HAC-3 Series 3" 11 Gauge										
HAC-3-2	2	6.766"	3.00"	1.875"	3.00"	1.50"	3.375"	0.406"	0.750"	1.063"
HAC-3-3	3	8.703"	3.00"	1.406"	3.00"	1.50"	2.984"	0.406"	0.750"	1.063"
HAC-3-4	4	11.703"	3.00"	1.406"	3.00"	1.50"	2.797"	0.406"	0.750"	1.063"
HAC-3-5	5	14.703"	3.00"	1.406"	3.00"	1.50"	2.859"	0.406"	0.750"	1.063"
HAC-3-6	6	17.703"	3.00"	1.406"	3.00"	1.50"	2.859"	0.406"	0.750"	1.063"
HAC-3-16	16	48.00"	3.00"		3.00"	1.50"		0.406"	0.750"	1.063"

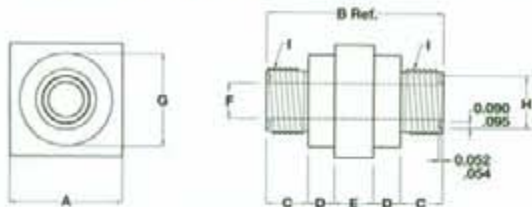
Outside Hole Mounting Unit



Part Number	Number of Holes	A	B	C
HAC-1 Series 1-1/2"				
HAC 1-1-2	1	2.188"	1.50"	0.344"
HAC 1-2-3	2	3.797"	1.50"	0.391"
HAC 1-3-4	3	5.297"	1.50"	0.391"
HAC 1-4-5	4	6.797"	1.50"	0.391"
HAC 1-5-6	5	8.297"	1.50"	0.391"
HAC-2 Series 2"				
HAC-2-2	1	2.656"	2.00"	0.328"
HAC-2-3	2	4.766"	2.00"	0.391"
HAC-2-4	3	6.797"	2.00"	0.391"
HAC-2-5	4	8.297"	2.00"	0.391"
HAC-3 Series 3"				
HAC-3-2	1	4.00"	3.00"	0.500"
HAC-3-3	2	6.859"	3.00"	0.422"
HAC-3-4	3	9.859"	3.00"	0.422"
HAC-3-5	4	12.859"	3.00"	0.422"

Junction Adapters

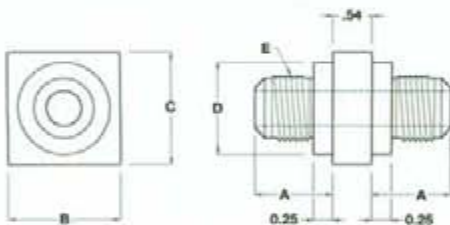
O-Ring Face Seal Male Junction Adapter



- Offered in a wide range of sizes in JIC, NPT, SAE and ORFS thread configurations
- Zinc plated to prevent corrosion
- Clamping at the fitting prevents loosening and other vibration related leaks

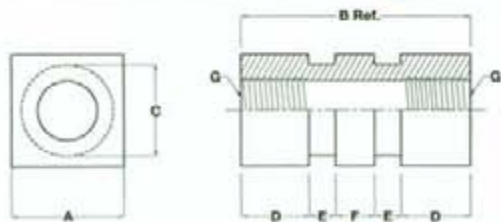
Part Number	Tube Size	A	B	C	D	E	F	G	I (Thread)	H
MJO-1-6	3/8"	1"	1.96"	0.43"	0.28"	0.54"	0.26"	0.84"	11/16"-16	0.496"
MJO-1-8	1/2"	1"	2.10"	0.50"	0.28"	0.54"	0.38"	0.84"	13/16"-16	0.621"
MJO-1-10	5/8"	1"	2.30"	0.60"	0.28"	0.54"	0.48"	0.84"	1"-14	0.748"
MJO-2-6	3/8"	1.50"	2.08"	0.43"	0.34"	0.54"	0.26"	1.20"	11/16"-16	0.496"
MJO-2-8	1/2"	1.50"	2.22"	0.50"	0.34"	0.54"	0.38"	1.20"	13/16"-16	0.621"
MJO-2-10	5/8"	1.50"	2.42"	0.60"	0.34"	0.54"	0.48"	1.20"	1"-14	0.748"
MJO-2-12	3/4"	1.50"	2.52"	0.65"	0.34"	0.54"	0.61"	1.20"	1-3/16"-12	0.873"
MJO-2-16	1"	1.50"	2.58"	0.68"	0.34"	0.54"	0.81"	1.20"	1-7/16"-12	1.058"
MJO-3-20	1-1/4"	2.25"	2.98"	0.68"	0.437"	0.75"	1.02"	2.12"	1-11/16"-12	1.309"
MJO-3-24	1-1/2"	2.25"	2.98"	0.68"	0.437"	0.75"	1.26"	2.12"	2"-12	1.621"

37° Flare Male Junction Adapter



Part Number	Tube Size	A	B	C	D	E (Thread)
1-1/2" Series						
MJA-1-4	1/4"	0.76"	1"	1"	0.84"	7/16"-20
MJA-1-6	3/8"	0.76"	1"	1"	0.84"	9/16"-18
MJA-1-8	1/2"	0.87"	1"	1"	0.84"	3/4"-16
MJA-1-10	5/8"	0.96"	1"	1"	0.84"	7/8"-14
2" Series						
MJA-2-4	1/4"	0.76"	1-1/2"	1-1/2"	1.20"	7/16"-20
MJA-2-6	3/8"	0.76"	1-1/2"	1-1/2"	1.20"	9/16"-18
MJA-2-8	1/2"	0.87"	1-1/2"	1-1/2"	1.20"	3/4"-16
MJA-2-10	5/8"	0.96"	1-1/2"	1-1/2"	1.20"	7/8"-14
MJA-2-12	3/4"	1.07"	1-1/2"	1-1/2"	1.20"	1-1/16"-12
MJA-2-14	7/8"	1.10"	1-1/2"	1-1/2"	1.20"	1-3/16"-12
MJA-2-16	1"	1.10"	1-1/2"	1-1/2"	1.20"	1-5/16"-12

Female Junction Adapter - Pipe



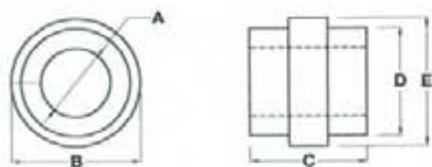
Part Number	A	B	C	D	E	F	G (Thread)
FJA-1-6-P	1"	2-13/16"	0.84"	0.84"	0.30"	0.54"	3/8" N.P.T.
FJA-2-12-P	1-1/2"	3-1/8"	1.20"	0.97"	0.32"	0.54"	3/4" N.P.T.
FJA-3-20-P	2-1/4"	2-5/8"	2.12"	0.49"	0.45"	0.74"	1-1/4" N.P.T.

Female Junction Adapter

Part Number	A	B	C	D	E	F	G (Thread)
FJA-1-6	1"	2-13/16"	0.84"	0.84"	0.30"	0.54"	3/4"-16 SAE
FJA-2-12	1-1/2"	3-1/8"	1.20"	0.97"	0.32"	0.54"	1-1/16"-12 SAE
FJA-3-20	2-1/4"	2-5/8"	2.12"	0.49"	0.45"	0.74"	1-5/8"-12 SAE

Split Bushings

Anti-Vibration Split Bushing



- Unique "grip" design secures cushion in place
- High quality EPDM rubber provides superior vibration damping with excellent oil resistance

Part Number	Tube Size	A	B	C	D	E
HAC-1 1-1/2" Series						
G-1-4	1/4"	0.235"	0.975"	0.875"	0.50"	1.312"
G-1-6	3/8"	0.360"	0.975"	0.875"	0.50"	1.312"
G-1-8	1/2"	0.485"	0.975"	0.875"	0.50"	1.312"
G-1-10	5/8"	0.610"	0.975"	0.875"	0.50"	1.312"
G-1-12	3/4"	0.735"	0.975"	0.875"	0.50"	1.312"
HAC-2 2" Series						
G-2-4	1/4"	0.235"	1.350"	1.250"	0.50"	1.312"
G-2-6	3/8"	0.360"	1.350"	1.250"	0.50"	1.312"
G-2-8	1/2"	0.485"	1.350"	1.250"	0.50"	1.312"
G-3-10	5/8"	0.610"	1.350"	1.250"	0.50"	1.312"
G-3-12	3/4"	0.735"	1.350"	1.250"	0.50"	1.312"
G-3-14	7/8"	0.860"	1.350"	1.250"	0.50"	1.312"
G-2-16	1"	0.985"	1.350"	1.250"	0.50"	1.312"
G-2-4P	1/4"	0.525"	1.350"	1.250"	0.50"	1.312"
G-2-6P	3/8"	0.660"	1.350"	1.250"	0.50"	1.312"
G-2-8P	1/2"	0.825"	1.350"	1.250"	0.50"	1.312"
G-2-12P	3/4"	1.035"	1.350"	1.250"	0.50"	1.312"
HAC-3 3" Series						
G-3-4	1/4"	0.234"	2.287"	2.187"	0.750"	1.750"
G-3-6	3/8"	0.360"	2.287"	2.187"	0.750"	1.750"
G-3-8	1/2"	0.485"	2.287"	2.187"	0.750"	1.750"
G-3-10	5/8"	0.610"	2.287"	2.187"	0.750"	1.750"
G-3-12	3/4"	0.735"	2.287"	2.187"	0.750"	1.750"
G-3-14	7/8"	0.860"	2.287"	2.187"	0.750"	1.750"
G-3-16	1"	0.985"	2.287"	2.187"	0.750"	1.750"
G-3-20	1-1/4"	1.235"	2.287"	2.187"	0.750"	1.750"
G-3-24	1-1/2"	1.485"	2.287"	2.187"	0.750"	1.750"
G-3-32	2"	1.985"	2.287"	2.187"	0.750"	1.750"
G-3-4P	1/4"	0.525"	2.287"	2.187"	0.750"	1.750"
G-3-6P	3/8"	0.660"	2.287"	2.187"	0.750"	1.750"
G-3-8P	1/2"	0.825"	2.287"	2.187"	0.750"	1.750"
G-3-12P	3/4"	1.035"	2.287"	2.187"	0.750"	1.750"
G-3-16P	1"	1.300"	2.287"	2.187"	0.750"	1.750"
G-3-20P	1-1/4"	1.645"	2.287"	2.187"	0.750"	1.750"
G-3-24P	1-1/2"	1.885"	2.287"	2.187"	0.750"	1.750"

Hardware

Socket Head Stacking Nut



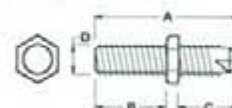
Part No.	HAC Series	A	B Dia.	C Threads
S-1	1"	1.335"	1/2"	5/16"-18
S-2	2"	1.800"	1/2"	5/16"-18
S-3	3"	2.780"	11/16"	3/8"-16

Thread Adapter (Install or Stack)



Part No.	HAC Series	A	B Dia.	C Threads
T-1	1 & 2	1.38"	0.63"	5/16"-18
T-3	3	2.00"	0.88"	3/8"-16

Self Tapping Adapter



HAC Series 1 & 2 Part No.	A	B	C	D
SF-1	1.50"	0.75"	0.625"	0.50"

Standard Hardware

Hex Bolt



Part No.	HAC Series	Thread	A
HB-1	HAC 1 & 2	5/16"-18	3/4"
HB-3	HAC 3	3/8"-16	1"

Lock Washer



Part No.	HAC Series	A
HW-1	HAC 1 & 2	5/16"
HW-3	HAC 3	3/8"

ZSI