



# WEBTEC

**WEBSTER INSTRUMENTS**  
(A DIVISION OF WEBTEC PRODUCTS)

## Inside this issue

The best things come in three's



The all new FlowHUB, the 'complete flow monitoring solution'



The C2000, our 3rd generation pump test-stand data acquisition system



The DHCR1500R hydraulic test kit for testing LARGE construction machinery

During May and June, Webtec launched three new products at AMC and WASTE Expo.



2009 AMC Conference May 4, 5 and 6th  
See [www.amc-online.org](http://www.amc-online.org)



Fluid Power Conference & Expo  
June 9-11, 2009 in Las Vegas  
See [www.fluidpowerexpo.com](http://www.fluidpowerexpo.com)

If you were unable to visit us, please don't hesitate to contact us on [sales@webster-inst.com](mailto:sales@webster-inst.com) or toll free 800-932-8378 (414-769-6400) to request further information

Webtec Summer 2009 Update

Issue  
7

# FLOW HUB

## The complete flow monitoring solution Measure - Display - Switch - Transmit

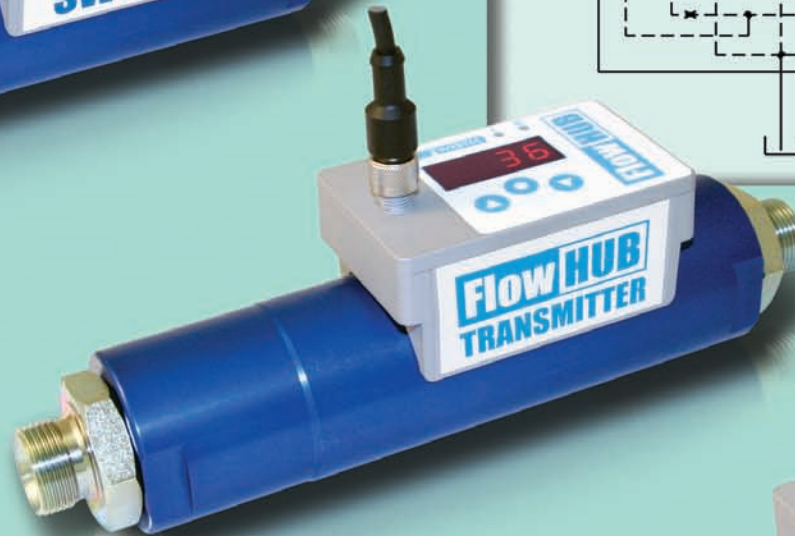
Webtec launched the latest hydraulic flow monitoring solution, called the FlowHUB, at the Hannover Fair 2009. Aimed at hydraulic system designers and maintenance engineers, the compact FlowHUB can replace up to six components in a hydraulic system greatly reducing component cost and installation labor. Applications are diverse and include condition monitoring, component testing and closed-loop machine control.

This technically innovative product can measure, display, switch and transmit flow readings in a fluid power or lubrication circuit as well as measure and display temperature. Three years of development has led to the FlowHUB using a unique sensing technology (Patent pending) designed to both minimize energy loss through pressure drop and ensure excellent resolution even for heavy-duty applications.

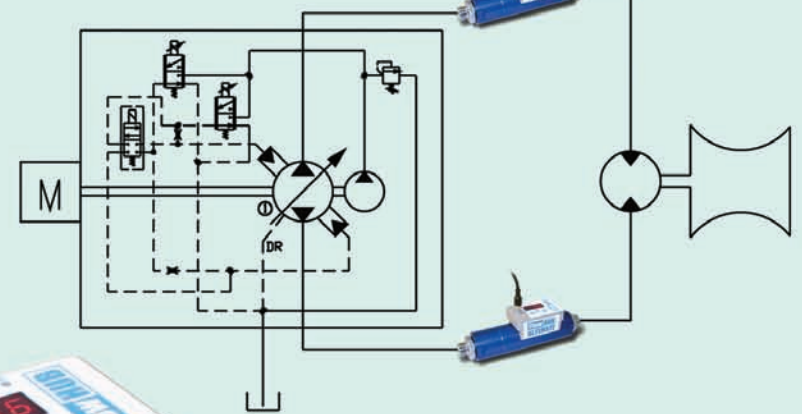
At launch, there will be 80 models of the FlowHUB covering 5 flow ranges up to

100 gpm and rated at either 3000 or 6000 psi. Each flow size will be available in three standard versions: 'Switch', 'Transmitter' and 'Ultimate' as well as the opportunity (volume permitting) to specify Custom / OEM versions which can be engineered to meet the requirements of special applications.

For further information please call toll free 800-932-8378 or email [sales@webster-inst.com](mailto:sales@webster-inst.com). The Flow- HUB is available to order from May 2009.



A typical closed loop control application using the FlowHUB Ultimate to feed signals back to a PLC controlling winch speed.



# C2000

The tailored data-acquisition system for hydraulic test stands

Webtec showed the 3rd generation C2000 at the Hannover exhibition in April. This turn-key system comprises: hydraulic sensors, data acquisition hardware, C2000 software and training.

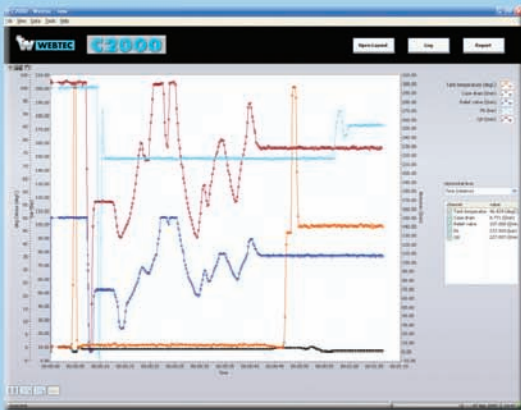
Designed primarily for at hydraulic pump repair and rebuild companies the C2000 is a complete instrumentation, display, logging, storage and reporting solution

tailored to the needs of the client. The system interface runs on Microsoft Windows (TM) and allows the test stand operator to produce a test certificate at the touch of a button while ensuring full ISO9000 traceability on test.

The C2000 is a robust production solution that substantially simplifies the testing and certification process. The C2000 is designed to be networked, which allows a supervisor to access test files from a different computer for e-mailing to customers or printing additional reports. The solution is fully scaleable with up to 64 inputs and includes sensors to measure all hydraulic parameters such as flow, pressure, temperature, speed, contamination and torque.

For a free demonstration DVD, please contact:  
sales@webster-inst.com or call toll free 1-800-932-8378.

The C2000 is available to order from June 2009.





# Hydraulic testing of large construction machinery

Webtec unveiled the DHCR1500R test kit at the Intermat and SED exhibitions, a test solution designed for testing the very largest mobile machinery with a maximum theoretical power of over 1500 HP (1 MW)

The test kit, designed in collaboration with a major heavy equipment OEM located in Peoria, IL, enables the operator to measure flow,

pressure and temperature while simultaneously loading the system using the purpose built pressure loading valve. The HV1500 is designed to allow the operator to simulate the machine circuit under operating conditions by restricting the flow and, hence, increasing the pump's operating pressure. Despite the large flows and pressures involved the valve can be operated with one hand and can be used to increase the load smoothly. The valve, like all Webtec HV series load valves, features a built-in burst disc safety mechanism to prevent over-pressurization that could otherwise damage the test kit and circuit under test. Rated to a maximum of 400 gpm and 6000 psi with 2" C62 4-Bolt flange fittings, the DHCR1500R test kit is available to order from May 2009.



As shown at



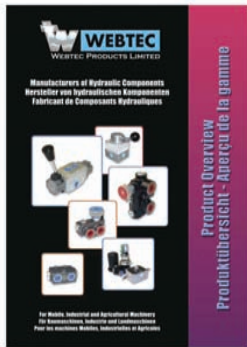
2009 AMC Conference May 4, 5 and 6th  
See [www.amc-online.org](http://www.amc-online.org)

and also at

WASTE EXPO

Fluid Power Conference & Expo  
Co-Located with Waste Expo  
June 9-11, 2009 in Las Vegas  
See [www.fluidpowerexpo.com](http://www.fluidpowerexpo.com)

# Fax back



*Request your  
free copy of the  
Webtec  
hydraulic  
components  
overview  
today...*

*Yes please*

I would like to receive e-shots: (e-mail).....



**WEBSTER INSTRUMENTS**  
(A DIVISION OF WEBTEC PRODUCTS)

1290 E. Waterford Ave. Milwaukee, WI 53235

Tel: (414) 769-6400 Fax: (414) 769-6591

E-mail: [sales@webster-inst.com](mailto:sales@webster-inst.com)

See us at: [www.webster-inst.com](http://www.webster-inst.com)



Webtec Products Limited reserve the right to make improvements and changes to the specification without notice.