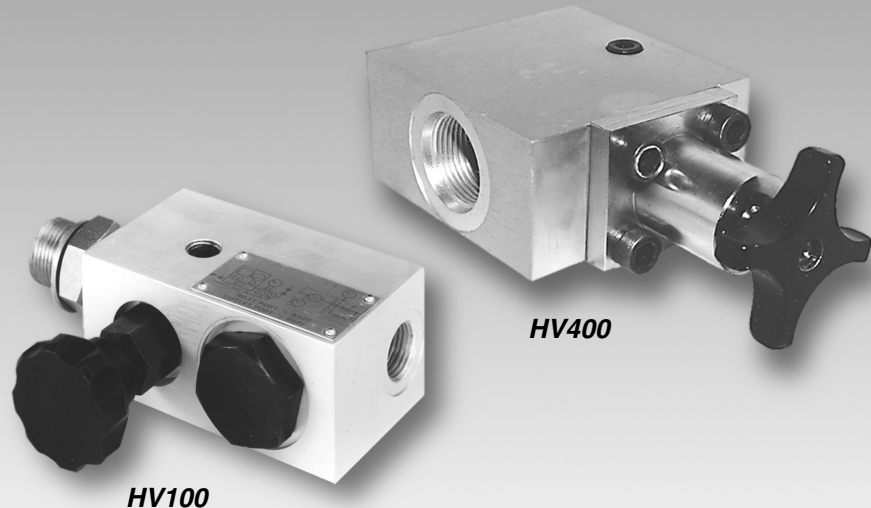


## HV100/HV400 Load Valve, with Webster INTERPASS™ safety disc system.

- 180 lpm
- 400 lpm
  
- Up to 6000 psi



The HV100/HV400 loading valve gives smooth progressive pressure control in both flow directions allowing components such as cylinders or motors to be tested without re-plumbing the test connections.

The valve features the exclusive Webster INTERPASS™ safety disc system which protects the operator, components and the environment by preventing unwanted external oil loss. In the event of overpressure the discs rupture and oil bypasses the valve internally at low pressure.

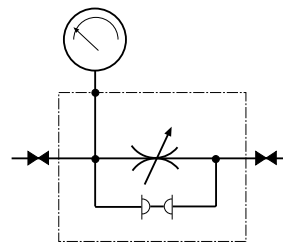
The valve features a 1/4" NPT gauge port which is ported to the inlet (in the forward direction).

Combined with Webtec flow meters or portable testers, the HV100/HV400 loading valve makes testing hydraulic components and circuits on a wide range of agricultural, industrial and mobile equipment fast, efficient and safe.

Please note that the HV Series are designed for loading a system and are not suitable as a shut-off valve to hold a static load.

### Features

- Bi-directional loading
- INTERPASS™ internal safety protection system, with replaceable burst discs
- Smooth progressive pressure control
- High tensile aluminium body rated at 6000psi
- Easy to retro-fit



HV100/HV400 Symbol

***Another quality product from the Webster Range***

## Specifications

Model No.	Maximum Flow		Maximum Pressure		Inlet port	Outlet port	Weight Kg
	lpm	gpm (US)	bar	psi			
HV100	180	48	420	6000	1/2" NPT	1/2"-14 BSP or 3/4"-16 UNF	1.3
HV400	400	106	420	6000	1-5/16"-12 -16 SAE O-Ring	1-5/16"-12 -16 SAE O-Ring	2

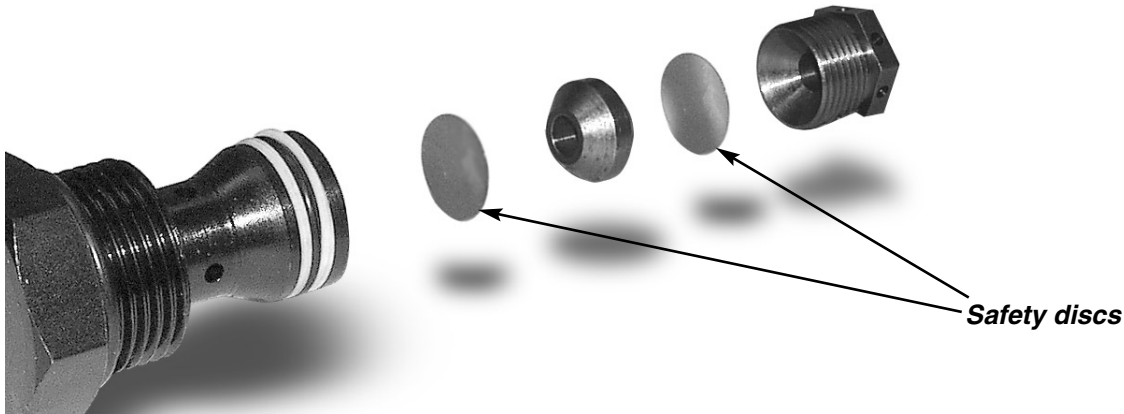
### HV100

The design of the precision 3 stage loading valve provides excellent tactile feedback and smooth control over the entire flow and pressure range. The HV100 may be ordered with either 3000, 4000, 5000 or 6000psi burst discs as required. Each valve is supplied with 4 spare burst discs.

### HV400

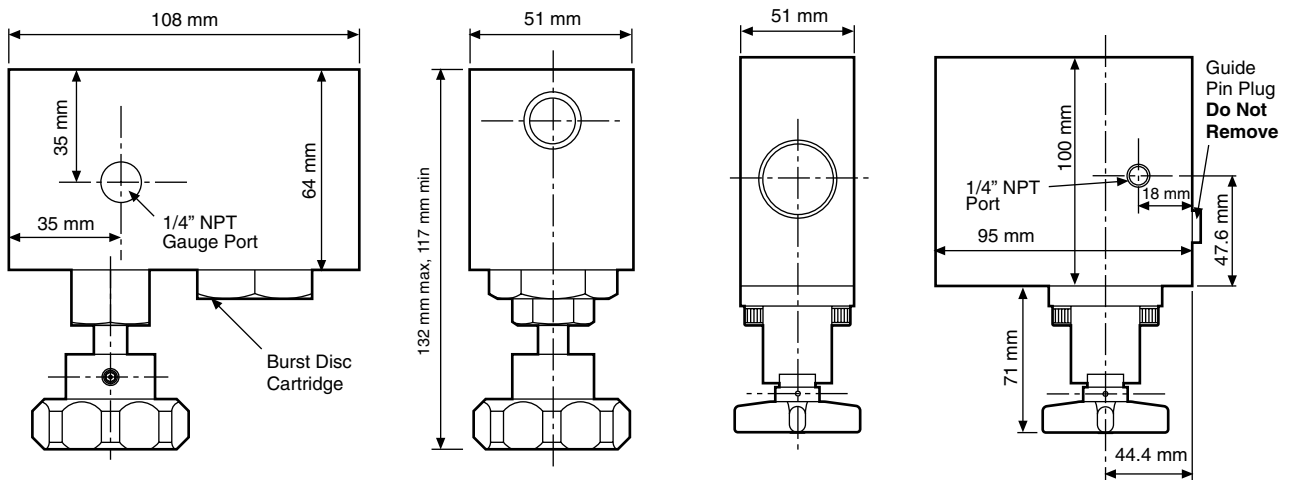
The unique design of the pressure balanced poppet ensures low handle effort throughout the flow and pressure ranges in addition to excellent tactile feedback, regardless of flow direction. The HV400 may be ordered with either 3000, 4000, 5000 or 6000psi burst discs as required. Each valve is supplied with 4 spare burst discs.

## Webster INTERPASS™ safety disc system



The loading valve is fitted with two safety discs that are designed to rupture internally at approximately 100 psi (7 bar) over the maximum pressure. When these discs fail, the loading valve becomes

inoperative and the oil flows freely downstream. Spare discs are supplied with each valve and these can be quickly and easily replaced.



Certificate No.8242