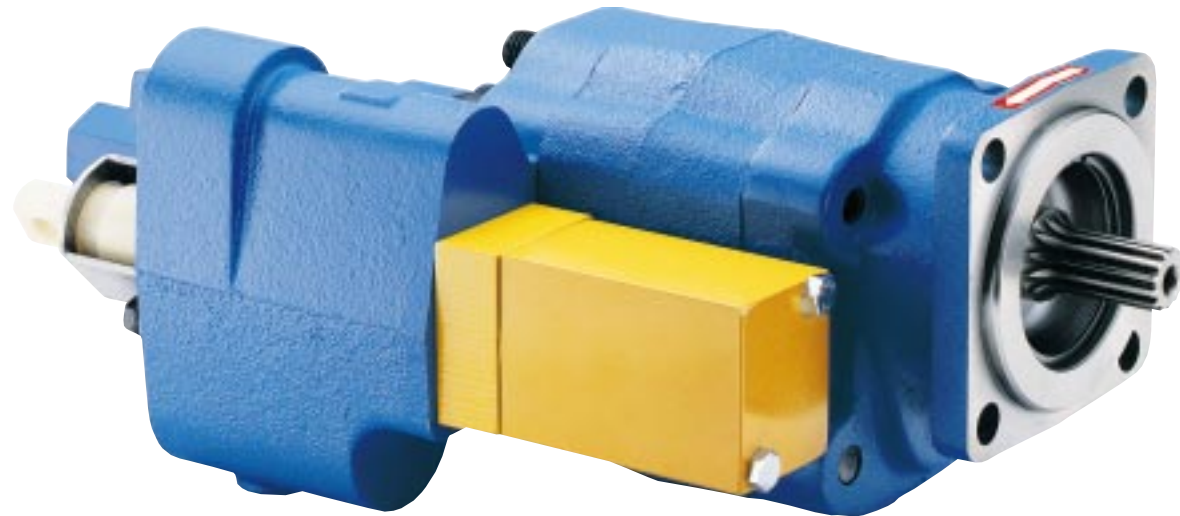


# PERMCO AIR SHIFT CYLINDER for Dump Pumps



**DMD-25 with 997-00971A**

The Permco Air Shift Cylinder is designed to convert a manual shift dump pump to an air shift dump pump. It can be used on all dump pumps similar to Permco's DM-650 remote mount and the DMD-25 direct mount series. Its compact design allows it to be used with all air shift PTO configurations. The 997-00971A is extremely easy to install with very few parts and is designed for the tough service expected on a dump application.



**997-00971A**

1500 Frost Road • Streetsboro, OH 44241  
Phone (330) 626-2801  
Fax (330) 626-2805  
www.permco.com



# AIR SHIFT CONTROLS

## PERMCO AIR SHIFT CONSOLE with PTO Knockout

Kicks the PTO out of gear automatically when the control lever for the dump pump is put into the "lower" position, thus reducing the possibility of running down the road with the PTO in gear. It also feathers, allowing for precise control of the dump body. The unit's compact size allows it to be mounted almost anywhere in the cab, including under the left side of the driver's seat. The 997-01043 assembly includes the console, feathering air shift valve with push-in fittings for controlling the dump pump, air shift valve for the PTO, PTO indicator light, and tubing.

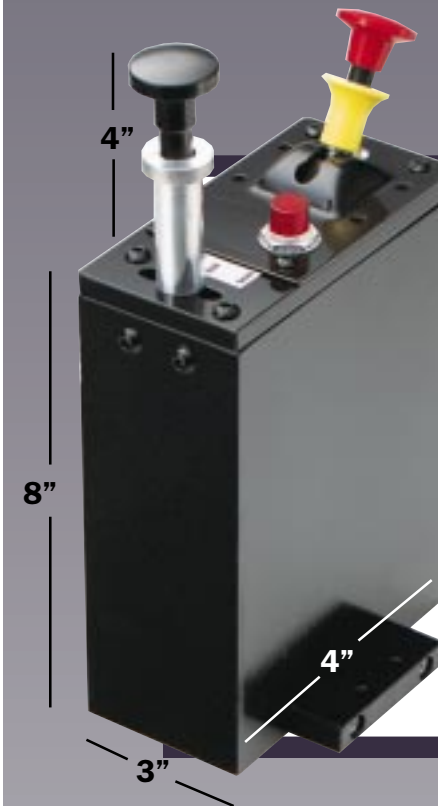
**997-01043**



## PERMCO AIR SHIFT CONSOLE used with the Williams (Chelsea) PTO Air Shifter

Allows for the 328863X air shift valve from Chelsea to be mounted in the console. The dump pump control valve feathers for precise control of the dump body. The unit's compact size allows it to be mounted almost anywhere in the cab, including under the left side of the driver's seat. The 997-01055 assembly includes the console, feathering air shift valve with push-in fittings for controlling the dump pump, and tubing.

**997-01055**



1500 Frost Road • Streetsboro, OH 44241  
Phone (330) 626-2801  
Fax (330) 626-2805  
www.permco.com

