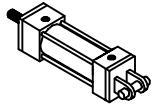


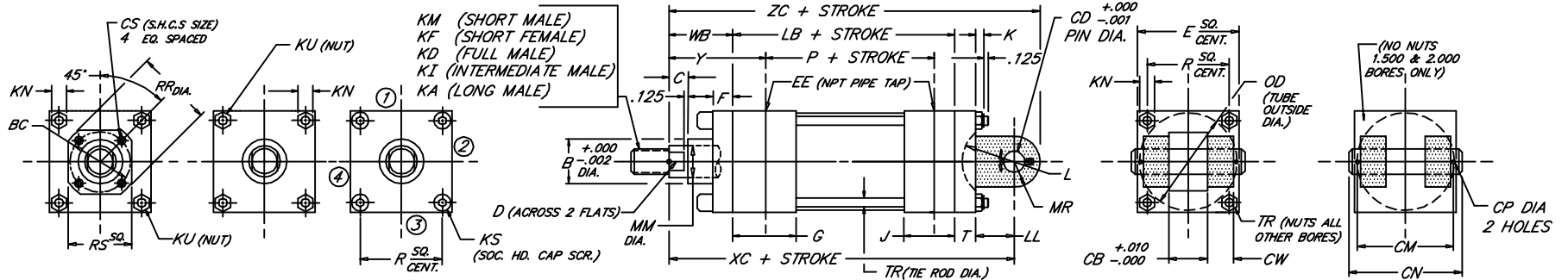
# CAP DETACHABLE CLEVIS

Heavy Duty Steel Air Cylinder

Peninsular Mounting Style: **MH 27**



NFPA  
NAAMS  
ISO: DIN-VDMA



1.32

BORE	ROD					ROD THREAD X LENGTH																				NPT														
	MM	KM & KF	KD	KI	KA	B	BC	C	CB	CD	CM	CN	CP	CS	CW	D	E	EE	F	G	J	K	KN	KS	KU	L	LB	LL	MR	OD	P	R	RR	RS	T	TR	WB	XC	Y	ZC
1.500	.625	7/16"-20 x .750	5/8"-18 x .750	1/2"-20 x .750	1/2"-20 x 1.125	1.124	---	.375	.765	.500	1.938	2.281	.106	---	.500	.500	2.000	3/8	.375	1.500	1.000	.312	.438	---	.250	.625	3.625	.375	.625	1.750	2.335	1.428	---	---	.375	.250	1.000	5.375	1.875	6.000
	1.000	3/4"-16 x 1.125	1"-14 x 1.125	7/8"-14 x 1.125	7/8"-14 x 1.875	1.499	---	.375	.765	.500	1.938	2.281	.106	---	.500	.875	2.500	3/8	.375	1.500	1.000	.344	.500	---	.312	.625	3.625	.375	.625	2.250	2.335	1.838	---	---	.375	.312	1.000	5.375	1.875	6.000
	1.375	1"-14 x 1.625	3/8"-12 x 1.625	1 1/4"-12 x 1.625	1 1/4"-12 x 2.500	1.999	---	.625	.765	.500	1.938	2.281	.106	---	.500	1.125	3.000	3/8	.375	1.500	1.000	.344	.500	.312	---	.625	3.750	.375	.625	2.750	2.460	2.192	---	---	.375	.312	1.375	5.875	2.250	6.500
2.000	.625	7/16"-20 x .750	5/8"-18 x .750	1/2"-20 x .750	1/2"-20 x 1.125	1.124	---	.375	.765	.500	1.938	2.281	.106	---	.500	.500	2.000	3/8	.375	1.500	1.000	.312	.438	---	.250	.625	3.625	.375	.625	1.750	2.335	1.428	---	---	.375	.250	1.000	5.375	1.875	6.000
	1.000	3/4"-16 x 1.125	1"-14 x 1.125	7/8"-14 x 1.125	7/8"-14 x 1.875	1.499	---	.375	.765	.500	1.938	2.281	.106	---	.500	.875	2.500	3/8	.375	1.500	1.000	.344	.500	---	.312	.625	3.625	.375	.625	2.250	2.335	1.838	---	---	.375	.312	1.375	5.750	2.250	6.375
	1.375	1"-14 x 1.625	3/8"-12 x 1.625	1 1/4"-12 x 1.625	1 1/4"-12 x 2.500	1.999	---	.625	.765	.500	1.938	2.281	.106	---	.500	1.125	3.000	3/8	.375	1.500	1.000	.344	.500	.312	---	.625	3.750	.375	.625	2.750	2.460	2.192	---	---	.375	.312	1.375	5.875	2.250	6.500
2.500	.625	7/16"-20 x .750	5/8"-18 x .750	1/2"-20 x .750	1/2"-20 x 1.125	1.124	---	.375	.765	.500	1.938	2.281	.106	---	.500	.500	2.000	3/8	.375	1.500	1.000	.312	.438	---	.250	.625	3.625	.375	.625	1.750	2.335	1.428	---	---	.375	.250	1.000	5.375	1.875	6.125
	1.000	3/4"-16 x 1.125	1"-14 x 1.125	7/8"-14 x 1.125	7/8"-14 x 1.875	1.499	---	.375	.765	.500	1.938	2.281	.106	---	.500	.875	2.500	3/8	.375	1.500	1.000	.344	.500	---	.312	.625	3.750	.375	.625	2.750	2.460	2.192	---	---	.375	.312	1.375	5.875	2.250	6.500
	1.375	1"-14 x 1.625	3/8"-12 x 1.625	1 1/4"-12 x 1.625	1 1/4"-12 x 2.500	1.999	---	.625	.765	.500	1.938	2.281	.106	---	.500	1.125	3.000	3/8	.375	1.500	1.000	.344	.500	.312	---	.625	3.750	.375	.625	2.750	2.460	2.192	---	---	.375	.312	1.375	5.875	2.250	6.500
3.250	.625	7/16"-20 x .750	5/8"-18 x .750	1/2"-20 x .750	1/2"-20 x 1.125	1.124	---	.375	.765	.500	1.938	2.281	.106	---	.500	.500	2.000	3/8	.375	1.500	1.000	.312	.438	---	.250	.625	3.625	.375	.625	1.750	2.335	1.428	---	---	.375	.250	1.000	5.375	1.875	6.125
	1.000	3/4"-16 x 1.125	1"-14 x 1.125	7/8"-14 x 1.125	7/8"-14 x 1.875	1.499	---	.375	.765	.500	1.938	2.281	.106	---	.500	.875	2.500	3/8	.375	1.500	1.000	.344	.500	---	.312	.625	3.625	.375	.625	2.250	2.335	1.838	---	---	.375	.312	1.375	5.750	2.250	6.375
	1.375	1"-14 x 1.625	3/8"-12 x 1.625	1 1/4"-12 x 1.625	1 1/4"-12 x 2.500	1.999	---	.625	.765	.500	1.938	2.281	.106	---	.500	1.125	3.000	3/8	.375	1.500	1.000	.344	.500	.312	---	.625	3.750	.375	.625	2.750	2.460	2.192	---	---	.375	.312	1.375	5.875	2.250	6.500
4.000	.625	7/16"-20 x .750	5/8"-18 x .750	1/2"-20 x .750	1/2"-20 x 1.125	1.124	---	.375	.765	.500	1.938	2.281	.106	---	.500	.500	2.000	3/8	.375	1.500	1.000	.312	.438	---	.250	.625	3.625	.375	.625	1.750	2.335	1.428	---	---	.375	.250	1.000	5.375	1.875	6.125
	1.000	3/4"-16 x 1.125	1"-14 x 1.125	7/8"-14 x 1.125	7/8"-14 x 1.875	1.499	---	.375	.765	.500	1.938	2.281	.106	---	.500	.875	2.500	3/8	.375	1.500	1.000	.344	.500	---	.312	.625	3.625	.375	.625	2.250	2.335	1.838	---	---	.375	.312	1.375	5.750	2.250	6.375
	1.375	1"-14 x 1.625	3/8"-12 x 1.625	1 1/4"-12 x 1.625	1 1/4"-12 x 2.500	1.999	---	.625	.765	.500	1.938	2.281	.106	---	.500	1.125	3.000	3/8	.375	1.500	1.000	.344	.500	.312	---	.625	3.750	.375	.625	2.750	2.460	2.192	---	---	.375	.312	1.375	5.875	2.250	6.500
5.000	.625	7/16"-20 x .750	5/8"-18 x .750	1/2"-20 x .750	1/2"-20 x 1.125	1.124	---	.375	.765	.500	1.938	2.281	.106	---	.500	.500	2.000	3/8	.375	1.500	1.000	.312	.438	---	.250	.625	3.625	.375	.625	1.750	2.335	1.428	---	---	.375	.250	1.000	5.375	1.875	6.125
	1.000	3/4"-16 x 1.125	1"-14 x 1.125	7/8"-14 x 1.125	7/8"-14 x 1.875	1.499	---	.375	.765	.500	1.938	2.281	.106	---	.500	.875	2.500	3/8	.375	1.500	1.000	.344	.500	---	.312	.625	3.625	.375	.625	2.250	2.335	1.838	---	---	.375	.312	1.375	5.750	2.250	6.375
	1.375	1"-14 x 1.625	3/8"-12 x 1.625	1 1/4"-12 x 1.625	1 1/4"-12 x 2.500	1.999	---	.625	.765	.500	1.938	2.281	.106	---	.500	1.125	3.000	3/8	.375	1.500	1.000	.344	.500	.312	---	.625	3.750	.375	.625	2.750	2.460	2.192	---	---	.375	.312	1.375	5.875	2.250	6.500
6.000	.625	7/16"-20 x .750	5/8"-18 x .750	1/2"-20 x .750	1/2"-20 x 1.125	1.124	---	.375	.765	.500	1.938	2.281	.106	---	.500	.500	2.000	3/8	.375	1.500	1.000	.312	.438	---	.250	.625	3.625	.375	.625	1.750	2.335	1.428	---	---	.375	.250	1.000	5.375	1.875	6.125
	1.000	3/4"-16 x 1.125	1"-14 x 1.125	7/8"-14 x 1.125	7/8"-14 x 1.875	1.499	---	.375	.765	.500	1.938	2.281	.106	---	.500	.875	2.500	3/8	.375	1.500	1.000	.344	.500	---	.312	.625	3.625	.375	.625	2.250	2.335	1.838	---	---	.375	.312	1.375	5.750	2.250	6.375
	1.375	1"-14 x 1.625	3/8"-12 x 1.625	1 1/4"-12 x 1.625	1 1/4"-12 x 2.500	1.999	---	.625	.765	.500	1.938	2.281	.106	---	.500	1.125	3.000	3/8	.375	1.500	1.000	.344	.500	.312	---	.625	3.750	.375	.625	2.750	2.460	2.192	---	---	.375	.312	1.375	5.875	2.250	6.500

NEED DESIGN

FILE: MH27S2.dwg REV: 09-25-06

27650 Groesbeck Hwy • Roseville, MI 48066-2759 • Phone 586.775.7211 • Fax 586.775.4545 • Toll Free 800.526.7968 • e-mail: sales@peninsularcylinders.com • www.peninsularcylinders.com