

DETACHABLE REAR FLANGE

ISO Mounting Style IMH 5

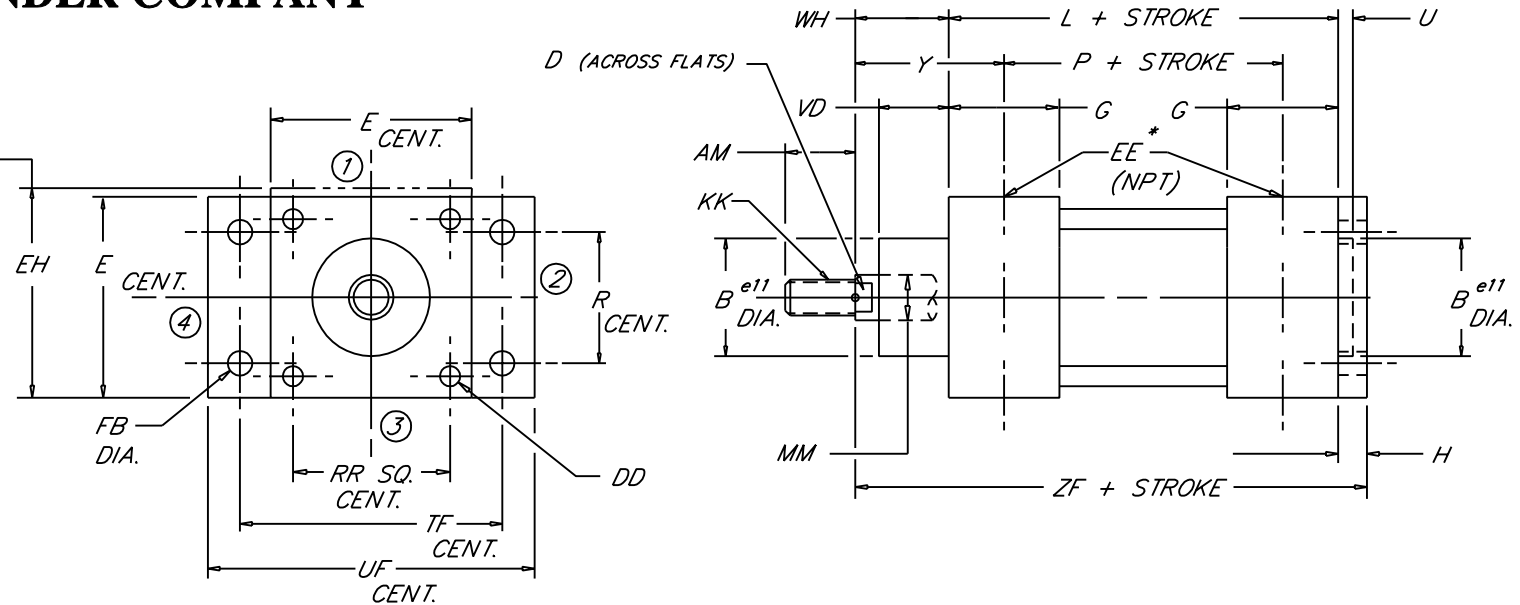
PENINSULAR[®] CYLINDER COMPANY

Medium-Heavy Duty
Steel Air Cylinder

Use EH only
for optional
prox. switch
boss if
required.

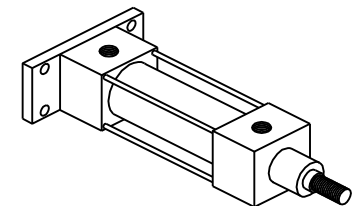
NOTE:

For bore sizes up to 1000 mm call Peninsular.
For additional rod sizes available call Peninsular.
For optional rod threads call Peninsular.
* For in port mounted proximity switches, ports and cushions refer to the ordering guide.
U.S. patent numbers: 4,726,282 and D295,753.



| BORE | ROD DIA. | | STANDARD | | MAX. | MAX. | | | | | | | | | | | | | | | | | | | | |
|------|----------|------------|----------|-----|------|------|-----|-----|-------|----|----|----|-----|-----|-----|------|-----|----|-----|----|-----|-----|-----|---|----|--|
| | MM | KK | AM | B | | | D | DD | E | EE | EH | FB | G | H | L | P | R | RR | TF | U | UF | VD | WH | Y | ZF | |
| 32 | 12 | M10 X 1.25 | 22 | 30 | 10 | M6 | 50 | 1/8 | 62.7 | 7 | 35 | 10 | 94 | 68 | 32 | 32.5 | 64 | 4 | 86 | 20 | 26 | 39 | 130 | | | |
| 40 | 16 | M12 X 1.25 | 24 | 35 | 13 | M6 | 58 | 1/4 | 62.7 | 9 | 39 | 10 | 105 | 77 | 36 | 38 | 72 | 4 | 96 | 22 | 30 | 44 | 145 | | | |
| 50 | 20 | M16 X 1.5 | 32 | 40 | 16 | M8 | 70 | 1/4 | 72.1 | 9 | 39 | 12 | 106 | 78 | 45 | 46.5 | 90 | 4 | 115 | 29 | 37 | 51 | 155 | | | |
| 63 | 20 | M16 X 1.5 | 32 | 45 | 16 | M8 | 85 | 3/8 | 80.3 | 9 | 46 | 12 | 121 | 89 | 50 | 56.5 | 100 | 4 | 130 | 29 | 37 | 53 | 170 | | | |
| 80 | 25 | M20 X 1.5 | 40 | 45 | 21 | M10 | 105 | 3/8 | 94.5 | 12 | 48 | 16 | 128 | 96 | 63 | 72 | 126 | 4 | 165 | 35 | 46 | 62 | 190 | | | |
| 100 | 32 | M20 X 1.5 | 40 | 55 | 21 | M10 | 130 | 1/2 | 114.6 | 14 | 51 | 16 | 138 | 102 | 75 | 89 | 150 | 4 | 187 | 38 | 51 | 69 | 205 | | | |
| 125 | 32 | M27 X 2.0 | 54 | 60 | 27 | M12 | 157 | 1/2 | 141.5 | 16 | 62 | 20 | 160 | 124 | 90 | 110 | 180 | 6 | 224 | 50 | 65 | 83 | 245 | | | |
| 160 | 40 | M36 X 2.0 | 72 | 65 | 36 | M16 | 195 | 3/4 | 165.1 | 18 | 70 | 20 | 180 | 130 | 115 | 140 | 230 | 6 | 280 | 60 | 80 | 105 | 280 | | | |
| 200 | 40 | M36 X 2.0 | 72 | 75 | 36 | M16 | 238 | 3/4 | 238 | 22 | 70 | 25 | 180 | 130 | 135 | 175 | 270 | 6 | 320 | 70 | 95 | 120 | 300 | | | |
| 250 | 50 | M42 X 2.0 | 84 | 90 | 46 | M20 | 290 | 1 | 290 | 26 | 70 | 25 | 200 | 138 | 165 | 220 | 330 | 10 | 395 | 80 | 105 | 136 | 330 | | | |
| 320 | 50 | M48 X 2.0 | 96 | 110 | 46 | M24 | 353 | 1 | 353 | 33 | 75 | 30 | 220 | 158 | 200 | 270 | 400 | 10 | 475 | 90 | 120 | 151 | 370 | | | |

METRIC



VDMA 24-562
NAAMS
DIN ISO 6431
(MF2)

NEVA DESIGN 8-12-98

