

# DETACHABLE FRONT FLANGE

ISO Mounting Style IMH 4

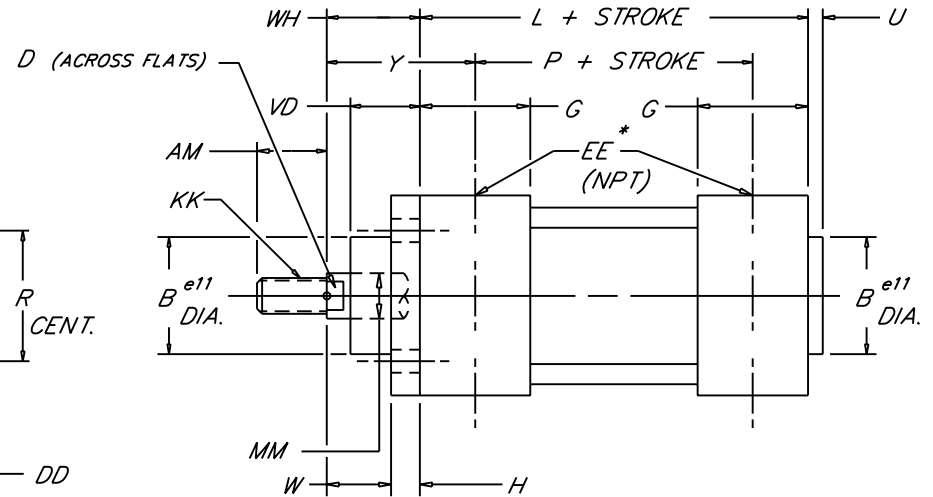
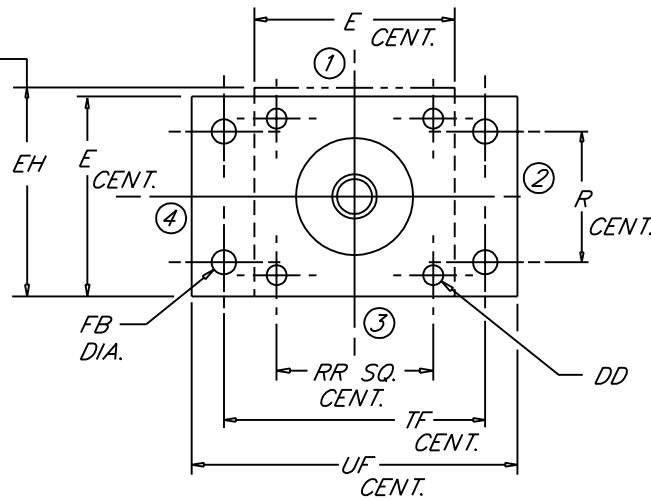
## PENINSULAR® CYLINDER COMPANY

Medium-Heavy Duty  
Steel Air Cylinder

Use EH only for optional prox. switch boss if required.

**NOTE:**

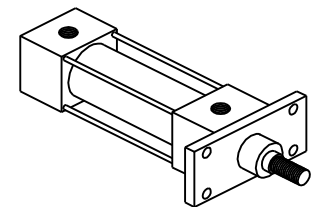
For bore sizes up to 1000 mm call Peninsular.  
For additional rod sizes available call Peninsular.  
For optional rod threads call Peninsular.  
\* For in port mounted proximity switches, ports and cushions refer to the ordering guide.  
U.S. patent numbers: 4,726,282 and D295,753.



| BORE | ROD DIA. |            | STANDARD MALE ROD THREAD |     | MAX. |     |     |     |       |    |    |    |     |     | MAX. |      |     |    |     |    |    |     |     |  |
|------|----------|------------|--------------------------|-----|------|-----|-----|-----|-------|----|----|----|-----|-----|------|------|-----|----|-----|----|----|-----|-----|--|
|      | MM       | KK         | AM                       | B   | D    | DD  | E   | EE  | EH    | FB | G  | H  | L   | P   | R    | RR   | TF  | U  | UF  | VD | W  | WH  | Y   |  |
| 32   | 12       | M10 X 1.25 | 22                       | 30  | 10   | M6  | 50  | 1/8 | 62.7  | 7  | 35 | 10 | 94  | 68  | 32   | 32.5 | 64  | 4  | 86  | 20 | 16 | 26  | 39  |  |
| 40   | 16       | M12 X 1.25 | 24                       | 35  | 13   | M6  | 58  | 1/4 | 62.7  | 9  | 39 | 10 | 105 | 77  | 36   | 38   | 72  | 4  | 96  | 22 | 20 | 30  | 44  |  |
| 50   | 20       | M16 X 1.5  | 32                       | 40  | 16   | M8  | 70  | 1/4 | 72.1  | 9  | 39 | 12 | 106 | 78  | 45   | 46.5 | 90  | 4  | 115 | 29 | 25 | 37  | 51  |  |
| 63   | 20       | M16 X 1.5  | 32                       | 45  | 16   | M8  | 85  | 3/8 | 80.3  | 9  | 46 | 12 | 121 | 89  | 50   | 56.5 | 100 | 4  | 130 | 29 | 25 | 37  | 53  |  |
| 80   | 25       | M20 X 1.5  | 40                       | 45  | 21   | M10 | 105 | 3/8 | 94.5  | 12 | 48 | 16 | 128 | 96  | 63   | 72   | 126 | 4  | 165 | 35 | 30 | 46  | 62  |  |
| 100  | 32       | M20 X 1.5  | 40                       | 55  | 21   | M10 | 130 | 1/2 | 114.6 | 14 | 51 | 16 | 138 | 102 | 75   | 89   | 150 | 4  | 187 | 38 | 35 | 51  | 69  |  |
| 125  | 32       | M27 X 2.0  | 54                       | 60  | 27   | M12 | 157 | 1/2 | 141.5 | 16 | 62 | 20 | 160 | 124 | 90   | 110  | 180 | 6  | 224 | 50 | 45 | 65  | 83  |  |
| 160  | 40       | M36 X 2.0  | 72                       | 65  | 36   | M16 | 195 | 3/4 | 165.1 | 18 | 70 | 20 | 180 | 130 | 115  | 140  | 230 | 6  | 280 | 60 | 60 | 80  | 105 |  |
| 200  | 40       | M36 X 2.0  | 72                       | 75  | 36   | M16 | 238 | 3/4 | 238   | 22 | 70 | 25 | 180 | 130 | 135  | 175  | 270 | 6  | 320 | 70 | 70 | 95  | 120 |  |
| 250  | 50       | M42 X 2.0  | 84                       | 90  | 46   | M20 | 290 | 1   | 290   | 26 | 70 | 25 | 200 | 138 | 165  | 220  | 330 | 10 | 395 | 80 | 80 | 105 | 136 |  |
| 320  | 50       | M48 X 2.0  | 96                       | 110 | 46   | M24 | 353 | 1   | 353   | 33 | 75 | 30 | 220 | 158 | 200  | 270  | 400 | 10 | 475 | 90 | 90 | 120 | 151 |  |

NEVA DESIGN 8-12-98

METRIC



VDMA 24-562  
NAAMS  
DIN ISO 6431  
(MF1)

