

Series 2H Heavy Duty Hydraulic Cylinders

Model Numbers

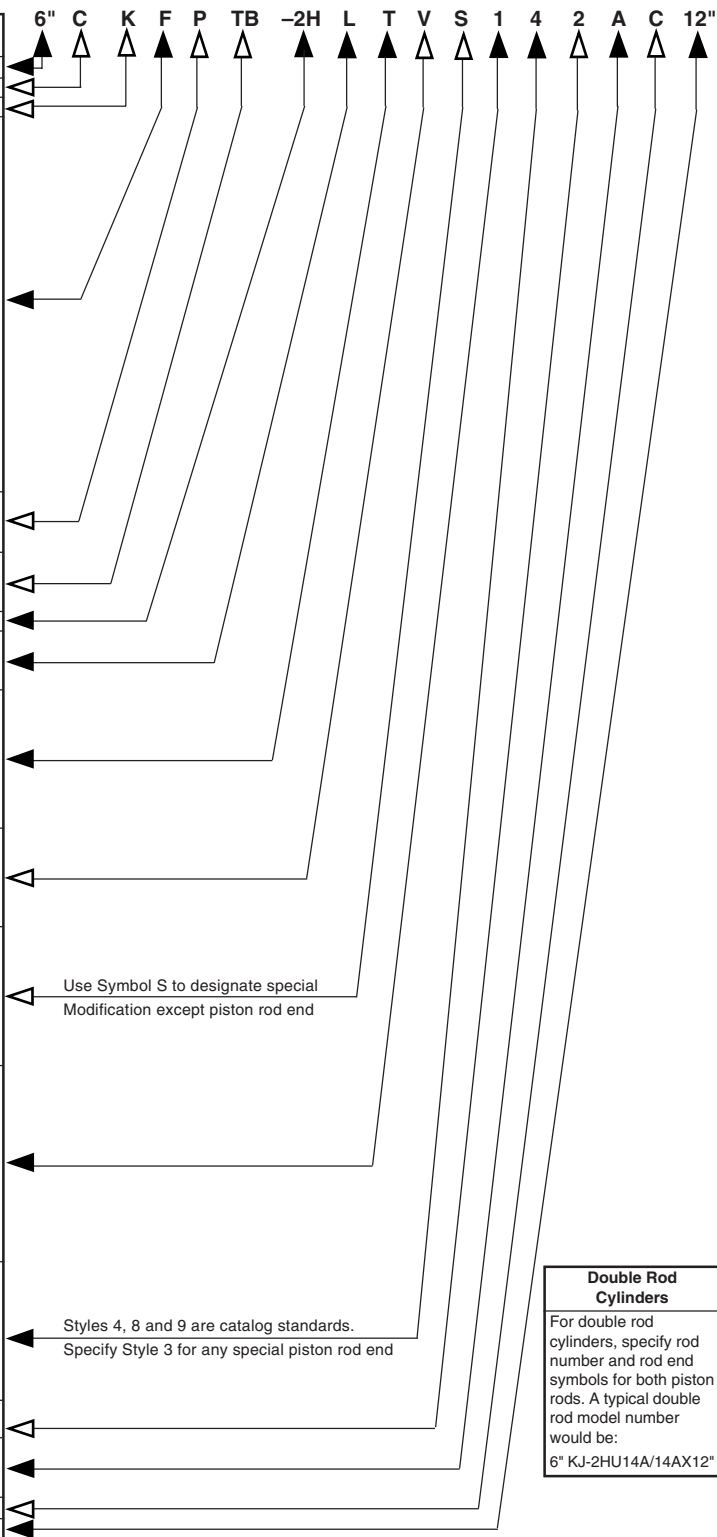
Series “2H” Model Numbers – How to Develop Them – How to “Decode” Them

Parker Series 2H cylinders can be completely and accurately described by a model number consisting of coded symbols. To develop a model number, select only those symbols that represent

the cylinder required, and place them in the sequence indicated below.

Note: Page numbers with a letter prefix, ie: C77, are located in section C of this catalog.

Feature	Description	Page No.	Symbol
Bore*	Specify in inches		
Cushion-Head	Used only if cushion required	C94,42 & 43	C
Double-Rod	Used only if double-rod cylinder is required	58	K
Mounting* Style	Head Tie Rods Extended	44	TB
	Cap Tie Rods Extended	44	TC
	Both End Tie Rods Extended	44	TD
	Head Rectangular Flange	46	J
	Head Square Flange	46	JB
	Head Rectangular	46	JJ
	Cap Rectangular Flange	48	H
	Cap Square Flange	48	HB
	Cap Rectangular	48	HH
	Side Lugs	50	C†
	Centerline Lugs	50	E
	Side Tapped	50	F†
	Side End Angles	52	CB
	Side End Lugs	52	G†
	Cap Fixed Clevis	52	BB
	Head Trunnion	54	D
	Cap Trunnion	54	DB
Intermediate Fixed Trunnion‡	54	DD	
Spherical Bearing	56	SB	
Modifications Mounting	Used only for Thrust Key (Styles C,F,G, & CB)	C93	P
	Used only for Manifold Port O-Ring Seal (Style C)	C91	M
Combination Mounting Style	Any Practical Mounting Style	–	As listed above
	Listed Above	–	–
Series*	Used in all 2H Model Numbers	–	-2H
Piston	Ring packed piston standard	–	C
	Used only for Lipseal® Piston	43	L
	Used only for Hi-Load Piston	43	K
Ports*	SAE Straight Thread O-Ring Port (Standard)	C89	T
	Used only for NPTF (Dry Seal Pipe Thread)	C89	U
	Used only for BSP (Parallel Thread ISO 228)	C89	R
	Used only for SAE Flange Ports (3000 psi)	C89	P
	Used only for BSPT (Taper Thread)	C89	B
	Used only for Metric Thread	C89	G
	Used only for Metric Thread per ISO 6149	C89	Y
Common Modifications	High Water Content Fluid	C83	J
	Nut Retained Piston	43	F
	Fluorocarbon Seals	C83	V
	Water Service EPR Seals	C83 C83	W X
Special Modifications	Used only if special Modifications are required:		
	Oversize Ports	C91	S
	Port Position Change	C89	
	Special Seals	C83	
	Stop Tube*	C95	
	Stroke Adjuster Tie Rod Supports	C93 C93	
Piston Rod* Number	For Single Rod Cylinders, select one only. Refer to Rod number listing, Table 2, Pages 44 through 55	–	1
	See chart in Section C for minimum piston rod diameter	–	2
		–	3
		–	4
		–	5
		–	6
		–	7
		–	8
		–	9
		–	0
Piston* Rod End	Select:		
	Style 4 Small Male	C92	4
	Style 7 Female Thread for Spherical Rod Eye	B56	7
	Style 8 Intermediate Male	C92	8
	Style 9 Short Female	C92	9
Style 55 Rod End for Flange Coupling	C19	55	
Style 3 Special (Specify)	C92	3	
Piston Rod Alternate Thds.	Used only for stud two times longer than standard.	C92	2
Piston Rod* Threads	UNF Standard	C92	A
	BSF (British Fine)	C92	W
	Metric	C92	M
Cushion-Cap	Used only if cushion required	C94, 42 & 43	C
Stroke* *	Specify in inches	C93	–



Double Rod Cylinders

For double rod cylinders, specify rod number and rod end symbols for both piston rods. A typical double rod model number would be:
6" KJ-2HU14A/14AX12"

*Required for Basic Cylinder Model Number
*In case of Stop Tube, call out Gross Stroke Length

†Cylinders with these mounting styles should have a minimum stroke length equal to or greater than their bore size.

Dark Arrows Indicate Basic Minimum Model Number
‡Specify XI dimension

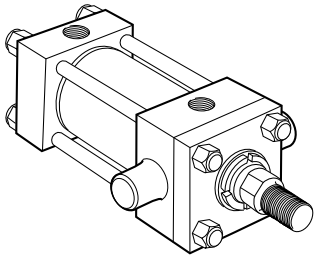
For Cylinder Division Plant Locations – See Page II.



Trunnion Mountings
1 1/2" to 6" Bore Sizes

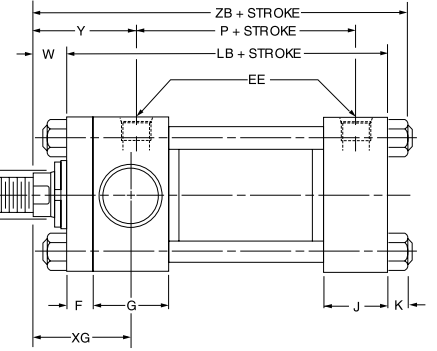
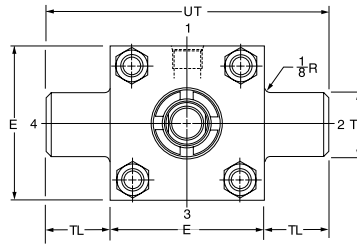
Series 2H Heavy Duty Hydraulic Cylinders

Head Trunnion Mounting
Style D
(NFA Style MT1)

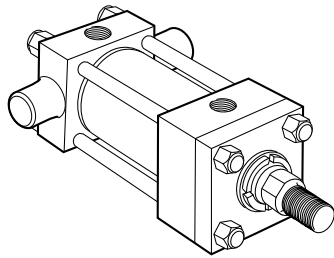


For "D" Style Mount
Maximum
Pressure
Rating - PSI

Bore	PSI
1 1/2	3000
2	3000
2 1/2	3000
3 1/4	2800
4	1800
5	1200
6	1000

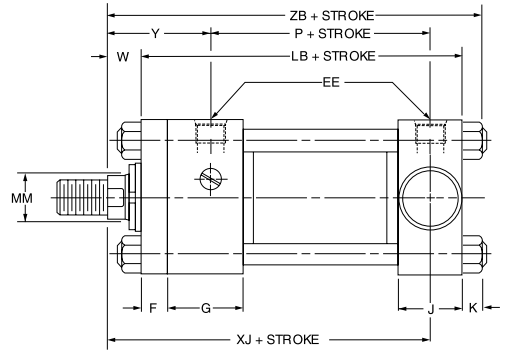
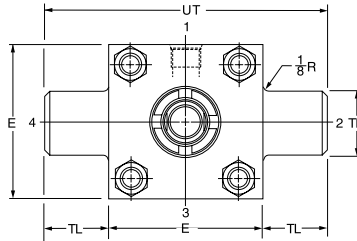


Cap Trunnion Mounting
Style DB
(NFA Style MT2)

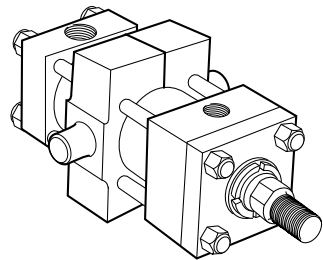


For "DB" Style Mount
Maximum
Pressure
Rating - PSI

Bore	PSI
1 1/2	3000
2	3000
2 1/2	3000
3 1/4	2800
4	1800
5	1200
6	1000

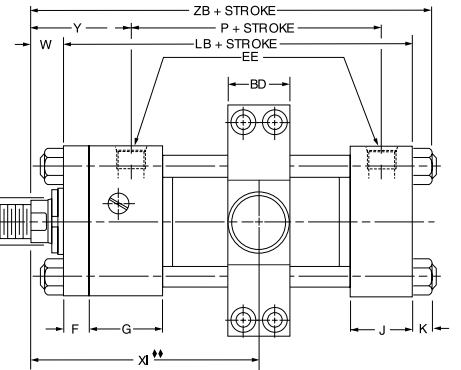
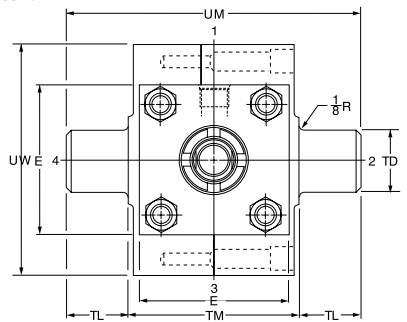


Intermediate Fixed Trunnion Mounting
Style DD
(NFA Style MT4)



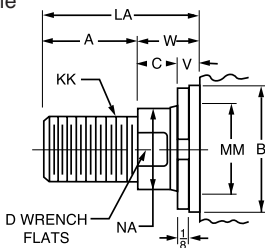
For "DD" Style Mount
Maximum
Pressure
Rating - PSI

Bore	PSI
1 1/2	3000
2	3000
2 1/2	3000
3 1/4	2800
4	1800
5	1200
6	1000



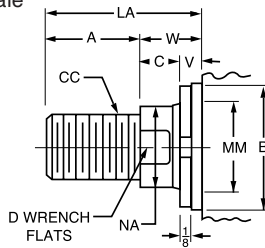
Rod End Dimensions — see table 2

Thread Style 4
(NFA Style SM)
Small Male



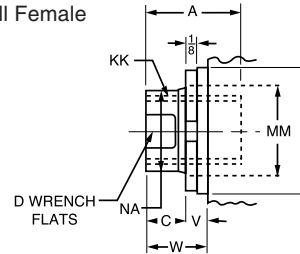
A high strength rod end stud is supplied on thread style 4 through 2" diameter rods and on thread style 8 through 1 3/8" diameter rods. Larger sizes or special rod ends are cut threads. Style 4 rod ends are recommended where the workpiece is secured against the rod shoulder.

Thread Style 8
(NFA Style IM)
Intermediate Male



When the workpiece is not shouldered, style 4 rod ends are recommended through 2" piston rod diameters and style 8 rod ends are recommended on larger diameters. Use style 9 for applications where female rod end threads are required. If rod end is not specified, style 4 will be supplied.

Thread Style 9
(NFA Style SF)
Small Female



"Special" Thread Style 3

Special thread, extension, rod eye, blank, etc., are also available.

To order, specify "Style 3" and give desired dimensions for CC or KK, A and LA. If otherwise special, furnish dimensioned sketch.

For additional information – call your local Parker Cylinder Distributor.