



48175 Gratiot Avenue • Chesterfield, MI 48051

## Servo and proportional valves backed by modern lab facilities

- Environmentally controlled labs equipped with test stands built to NASA specifications, calibrated with NIST standards.

- All servo and rebuilt proportional valves tested in labs prior to shipment.

- Over 1,000 servo units in stock, involving several product lines, including Atchley, Abex, Atos\*, Bosch, Moog, Pegasus\*, Rexroth, Vickers, Dyval, Parker, Oilgear and more.

- Rebuilt units shipped from stock usually the same day.

- **Servo lab capabilities:**

- Signal commands 1.0 mA to 999.0 mA
- Maximum pressure 6,000 psi
- Flow range .09 gpm (+/- .01) to 120.0 gpm (+/- .05)
- Flow plots using frictionless cylinders
- Factory-authorized and trained technicians
- Standard turnaround 2-3 days
- Final test reports furnished with all valves
  - Failure analysis
- Free evaluations completed in 24 hours



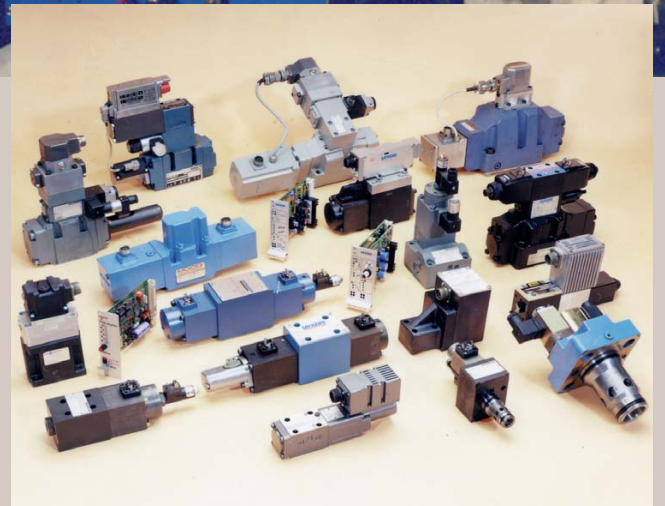
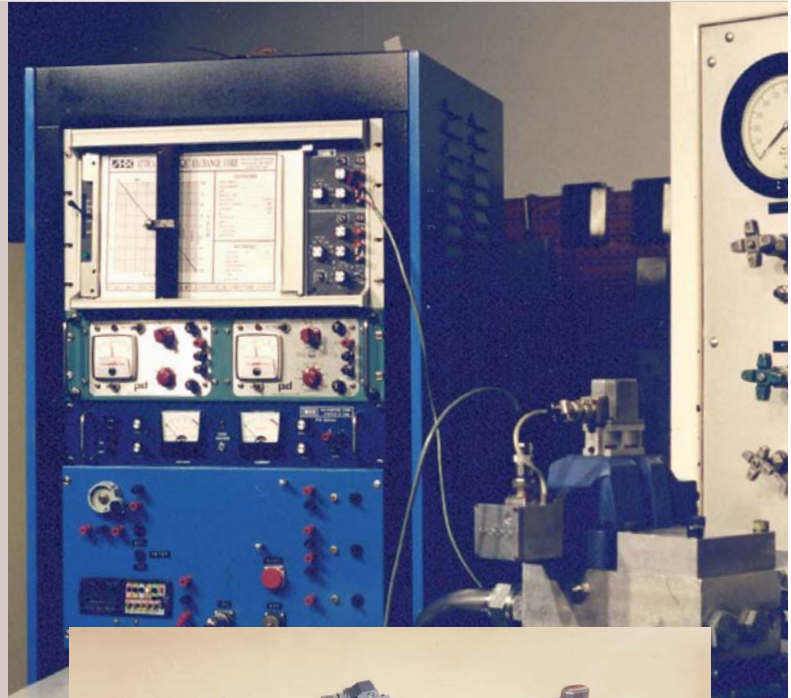
Servo and proportional valves

*\*Authorized service center/distributor*

**ATTICA...the benchmark for quality and service**

- 500-plus inventory of proportional valves.
  - Stocking manufacturers such as Atos\*, Bosch, Moog, Pegasus\*, Rexroth, Vickers, Parker and more.
- Rebuilt proportional valve units shipped from stock the same day.
  - **Proportional lab** capabilities:
    - DC and AC power, up to 200 volts
    - Original manufacturers' amplifiers used for testing
    - Signal commands 1.0 mA to 999.0 mA
      - Maximum pressure 6000 psi
    - Flow range .09 gpm (+/- .01) to 120.0 gpm (+/- .05)
    - Flow plots using frictionless cylinders
  - Final test reports furnished with all valves
  - Factory-authorized and trained technicians
    - Failure analysis
    - Standard turnaround 2-3 days
  - Free evaluations completed in 24 hours

*\*Authorized service center/distributor*



**800.422.4279**

586-949-4240 outside USA  
24-hr. fax: 586-949-5302  
e-mail: sales@ahx1.com

48175 Gratiot Avenue  
Chesterfield, MI 48051  
www.ahx1.com